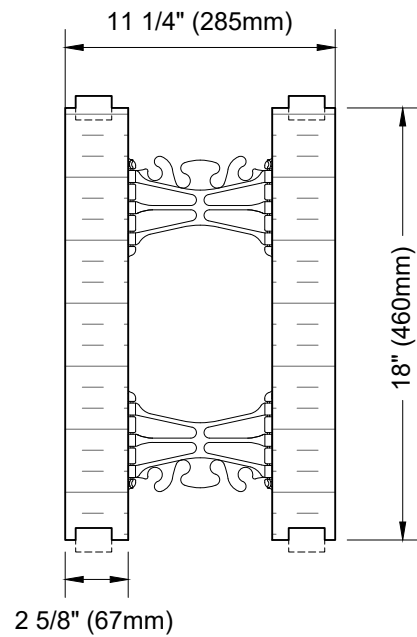


SCALE: 1:12



SCALE: 1:8

This detail is for general informational purposes only. The project design professional determines, in its sole discretion, whether this detail or a functionally equivalent detail is best suited for the project with respect to any architecture, engineering, and design requirements, including any local building code requirements. If this document is not reviewed and the product is not approved for use by a licensed design professional, the customer agrees that the detail may contain substantive flaws requiring correction, and hereby releases Tremco CPG Inc. from any and all liability related to the design and installation of the product. This detail is subject to change without notice. Contact Tremco to ensure you have the most recent version.

Standard Form Unit Profiles



Nudura Technical Support: 866-468-6299
International: +1 705-726-9499

Detail: Nudura 6" (152mm) Standard Form Unit

Drawn by: KS

Checked by: KS

Scale: As Noted

Revision #: 04

Revised by: KAB

Date: 3/13/2024

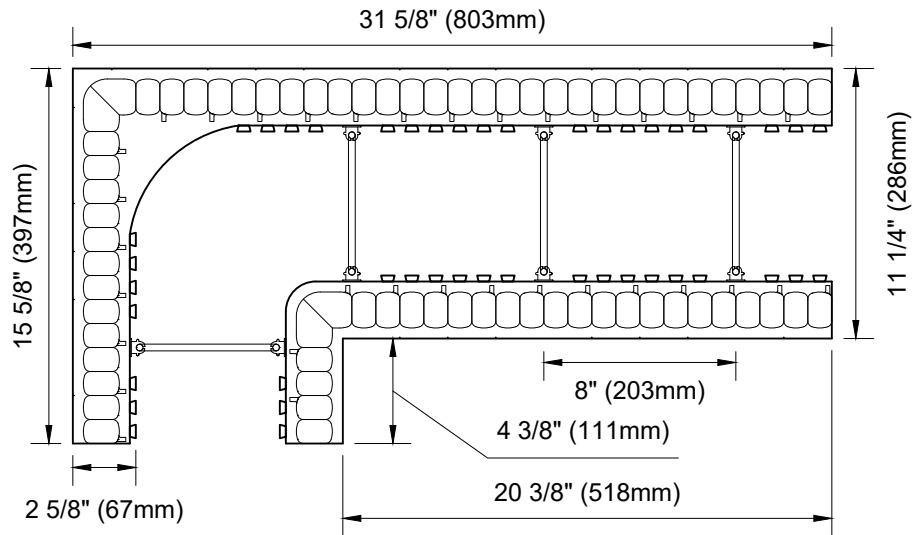
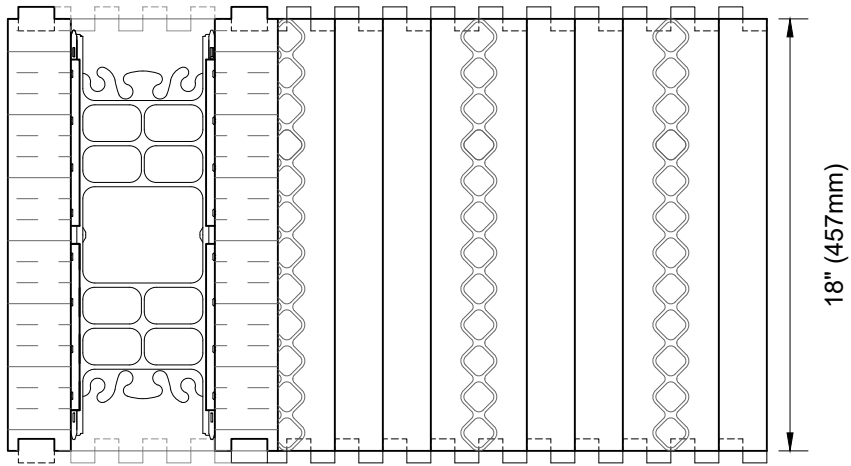
File Name:

A6A01



Construction Products Group

www.tremcocpg.com



This detail is for general informational purposes only. The project design professional determines, in its sole discretion, whether this detail or a functionally equivalent detail is best suited for the project with respect to any architecture, engineering, and design requirements, including any local building code requirements. If this document is not reviewed and the product is not approved for use by a licensed design professional, the customer agrees that the detail may contain substantive flaws requiring correction, and hereby releases Tremco CPG Inc. from any and all liability related to the design and installation of the product. This detail is subject to change without notice. Contact Tremco to ensure you have the most recent version.

Standard Form Unit Profiles



Nudura Technical Support: 866-468-6299
International: +1 705-726-9499

Detail: Nudura 6" (152mm) 90° Corner Form Unit

Drawn by: KS

Checked by: KS

Scale: 1:8

Revision #: 07

Revised by: KAB

Date: 3/13/2024

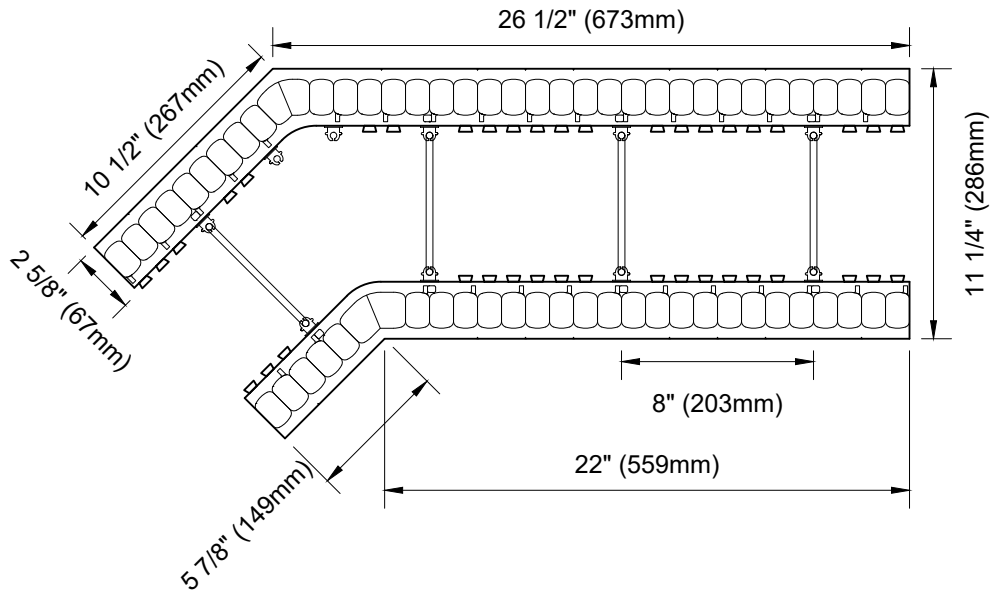
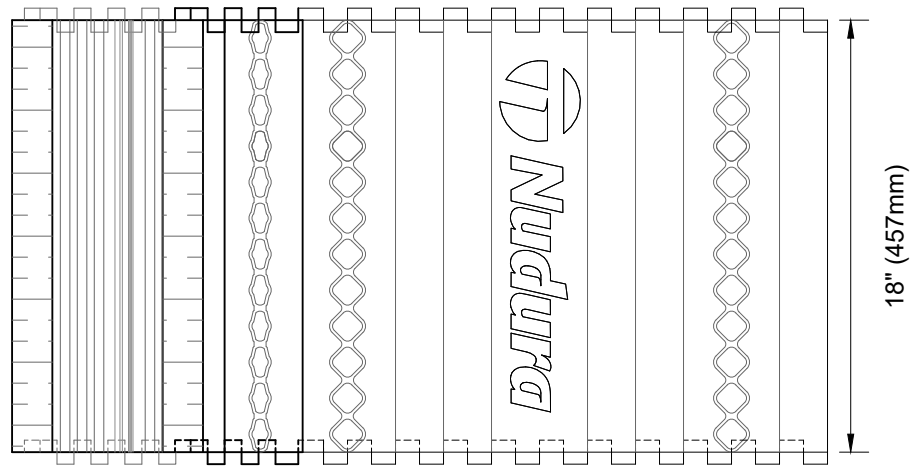
File Name:

A6A02



Construction Products Group

www.tremcocpg.com



This detail is for general informational purposes only. The project design professional determines, in its sole discretion, whether this detail or a functionally equivalent detail is best suited for the project with respect to any architecture, engineering, and design requirements, including any local building code requirements. If this document is not reviewed and the product is not approved for use by a licensed design professional, the customer agrees that the detail may contain substantive flaws requiring correction, and hereby releases Tremco CPG Inc. from any and all liability related to the design and installation of the product. This detail is subject to change without notice. Contact Tremco to ensure you have the most recent version.

Standard Form Unit Profiles

Detail: Nudura 6" (152mm) 45° Corner Form Unit

File Name:

Drawn by: KS

Checked by: KS

Scale: 1:8

A6A03

Revision #: 03

Revised by: KAB

Date: 3/13/2024

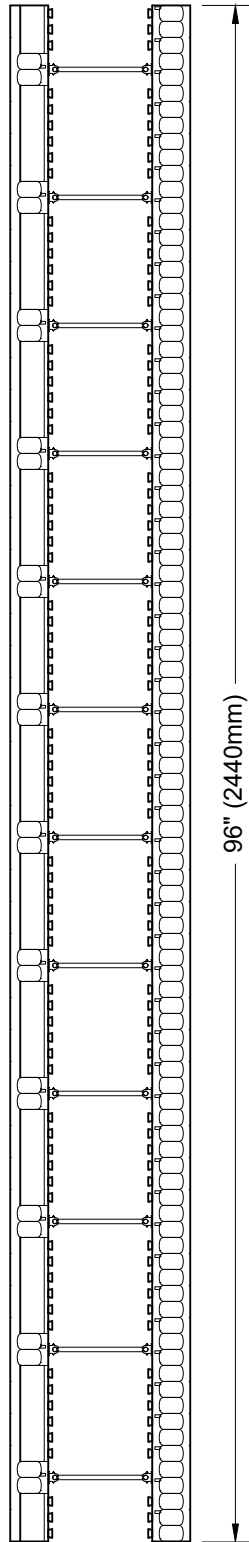
www.tremcocpg.com



Nudura Technical Support: 866-468-6299
International: +1 705-726-9499



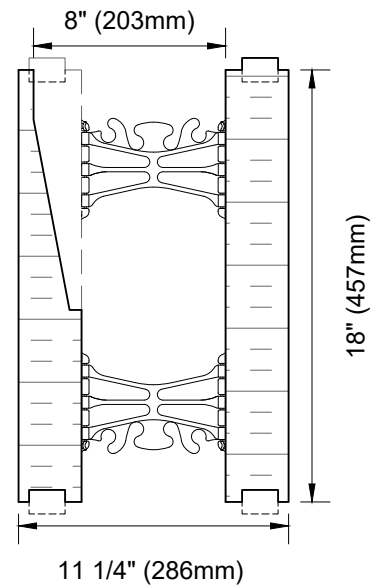
Construction Products Group



96" (2440mm)

5/8" (16mm) 2 5/8" (67mm)

SCALE: 1:12



SCALE: 1:8

This detail is for general informational purposes only. The project design professional determines, in its sole discretion, whether this detail or a functionally equivalent detail is best suited for the project with respect to any architecture, engineering, and design requirements, including any local building code requirements. If this document is not reviewed and the product is not approved for use by a licensed design professional, the customer agrees that the detail may contain substantive flaws requiring correction, and hereby releases Tremco CPG Inc. from any and all liability related to the design and installation of the product. This detail is subject to change without notice. Contact Tremco to ensure you have the most recent version.

Standard Form Unit Profiles



Nudura Technical Support: 866-468-6299
International: +1 705-726-9499

Detail: Nudura 6" (152mm) One Sided Taper Top Form Unit

Drawn by: KS

Checked by: KS

Scale: As Noted

Revision #: 03

Revised by: KAB

Date: 3/13/2024

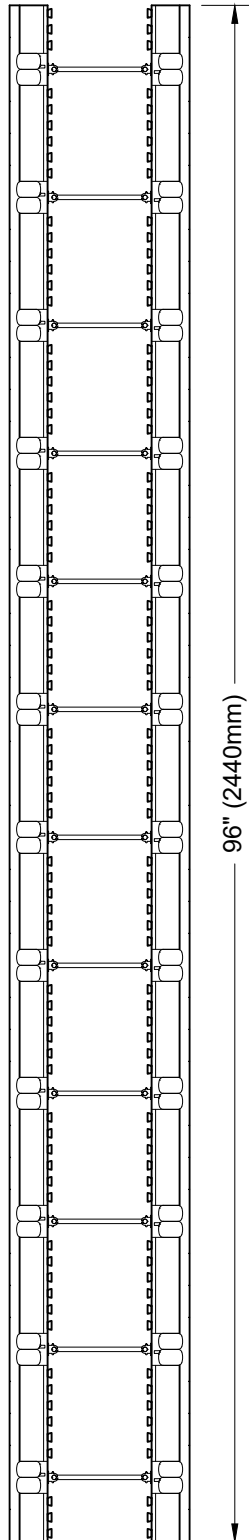
File Name:

A6A04



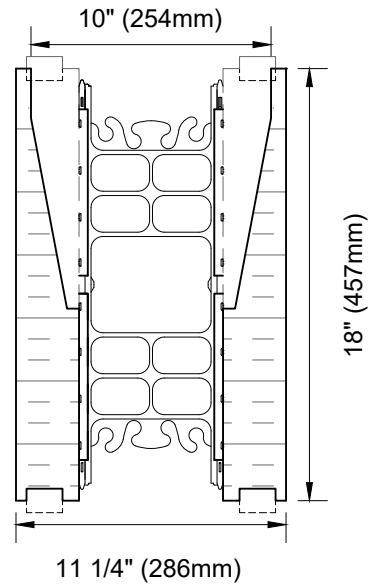
Construction Products Group

www.tremcocpg.com



5/8" (16mm) → → → 2 5/8" (67mm)

SCALE: 1:12



SCALE: 1:8

This detail is for general informational purposes only. The project design professional determines, in its sole discretion, whether this detail or a functionally equivalent detail is best suited for the project with respect to any architecture, engineering, and design requirements, including any local building code requirements. If this document is not reviewed and the product is not approved for use by a licensed design professional, the customer agrees that the detail may contain substantive flaws requiring correction, and hereby releases Tremco CPG Inc. from any and all liability related to the design and installation of the product. This detail is subject to change without notice. Contact Tremco to ensure you have the most recent version.

Standard Form Unit Profiles



Nudura Technical Support: 866-468-6299
International: +1 705-726-9499

Detail: Nudura 6" (152mm) Two Sided Taper Top Form Unit

Drawn by: KS

Checked by: KS

Scale: As Noted

Revision #: 05

Revised by: KAB

Date: 3/13/2024

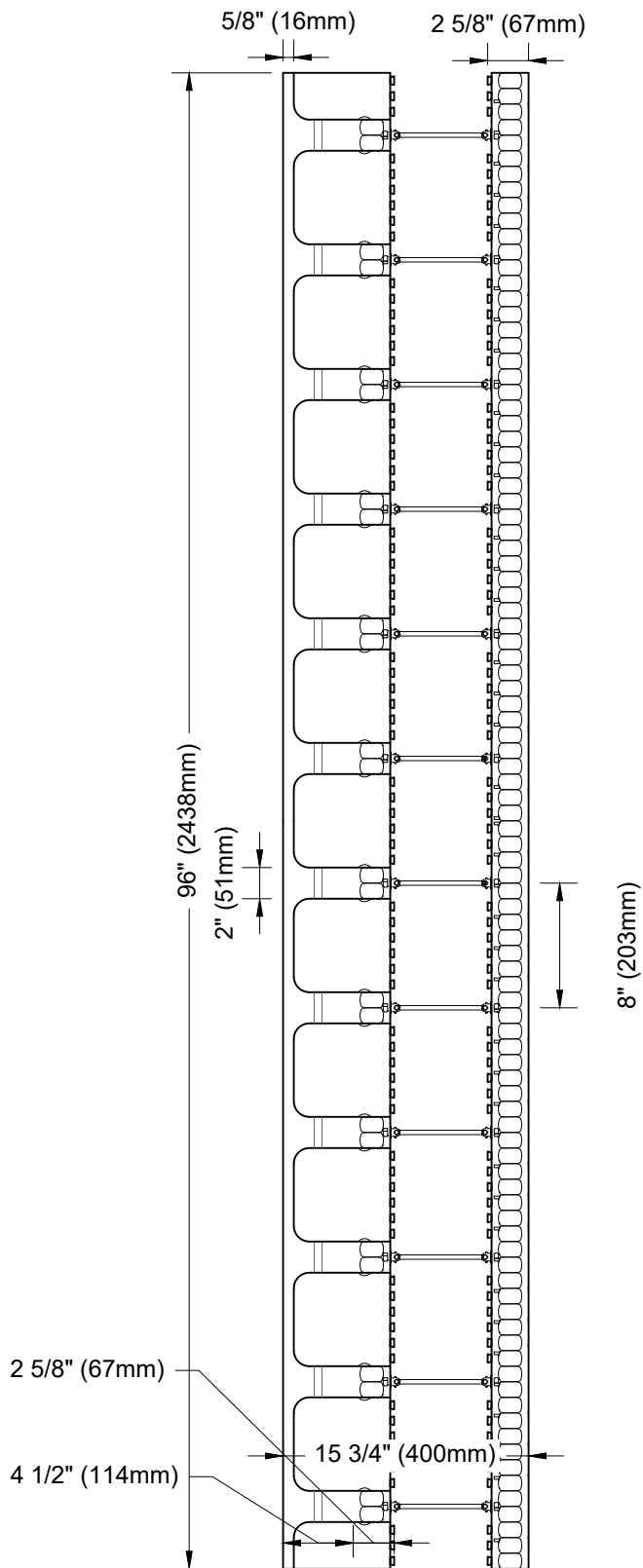
File Name:

A6A05

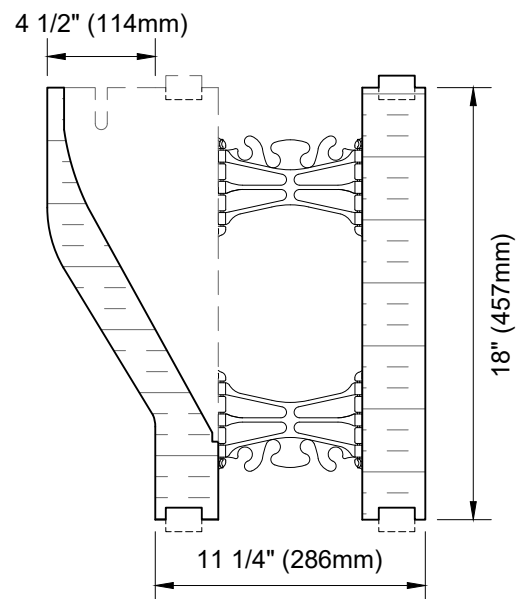


Construction Products Group

www.tremcocpg.com



SCALE: 1:12



SCALE: 1:8

This detail is for general informational purposes only. The project design professional determines, in its sole discretion, whether this detail or a functionally equivalent detail is best suited for the project with respect to any architecture, engineering, and design requirements, including any local building code requirements. If this document is not reviewed and the product is not approved for use by a licensed design professional, the customer agrees that the detail may contain substantive flaws requiring correction, and hereby releases Tremco CPG Inc. from any and all liability related to the design and installation of the product. This detail is subject to change without notice. Contact Tremco to ensure you have the most recent version.

Standard Form Unit Profiles



Nudura Technical Support: 866-468-6299
International: +1 705-726-9499

Detail: Nudura 6" (152mm) One Sided Brick Ledge Form Unit

Drawn by: KS

Checked by: KS

Scale: As Noted

Revision #: 04

Revised by: KAB

Date: 3/13/2024

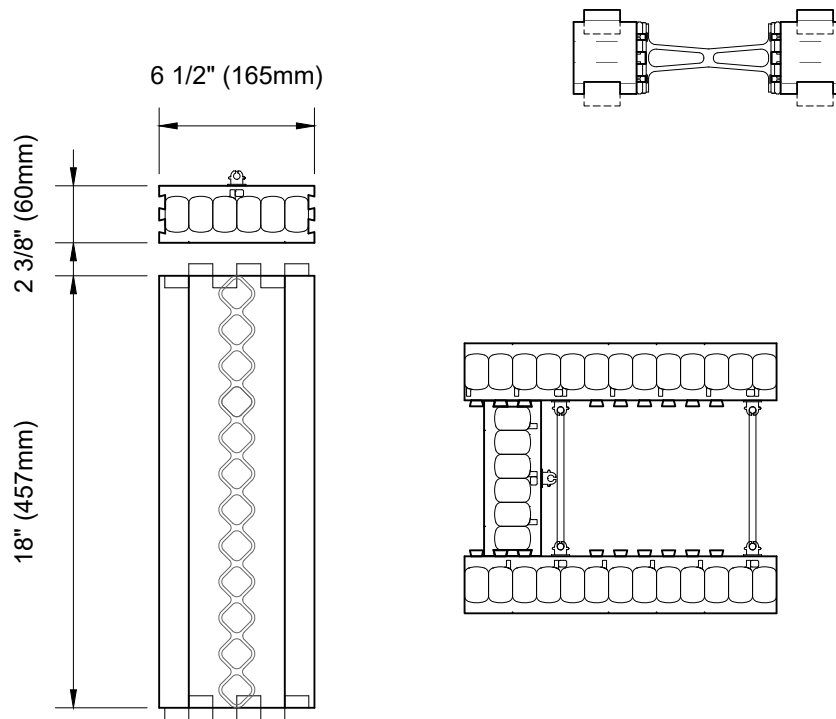
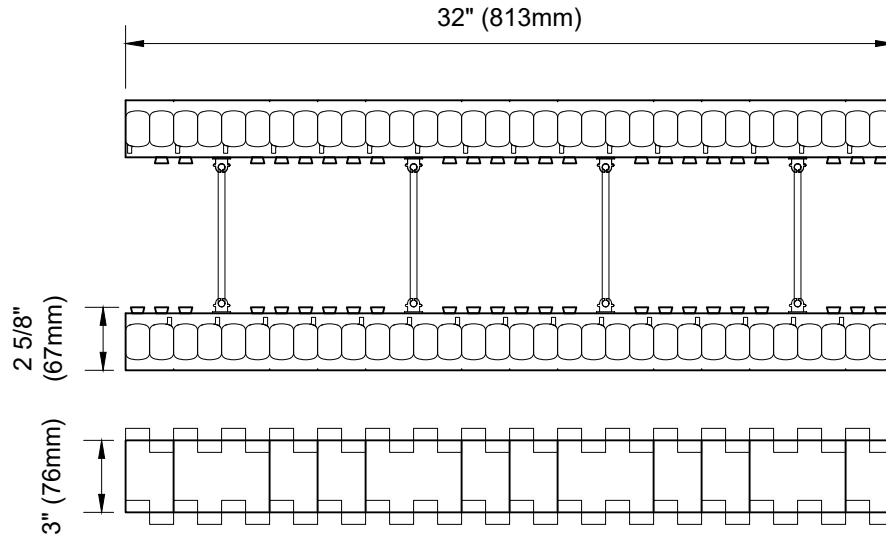
www.tremcocpg.com

File Name:

A6A06



Construction Products Group



This detail is for general informational purposes only. The project design professional determines, in its sole discretion, whether this detail or a functionally equivalent detail is best suited for the project with respect to any architecture, engineering, and design requirements, including any local building code requirements. If this document is not reviewed and the product is not approved for use by a licensed design professional, the customer agrees that the detail may contain substantive flaws requiring correction, and hereby releases Tremco CPG Inc. from any and all liability related to the design and installation of the product. This detail is subject to change without notice. Contact Tremco to ensure you have the most recent version.

Standard Form Unit Profiles



Nudura Technical Support: 866-468-6299
International: +1 705-726-9499

Detail: Nudura 6" (152mm) End Cap and Height Adjuster

Drawn by: KS

Checked by: KS

Scale: 1:8

Revision #: 03

Revised by: KAB

Date: 3/13/2024

File Name:

A6A08



Construction Products Group

www.tremcocpg.com